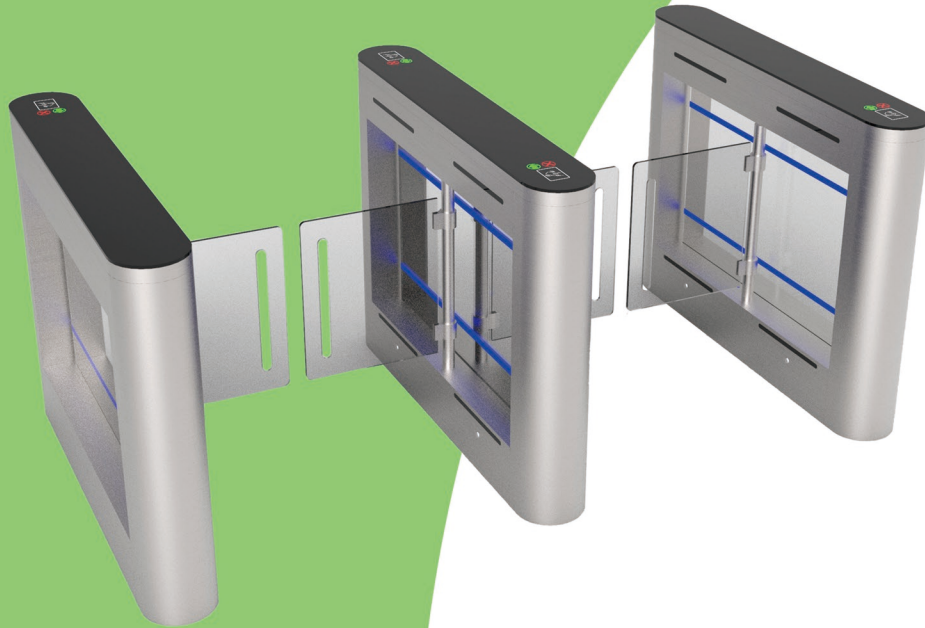


NEW DESIGN SWING TURNSTILE

MODEL: MT341



Product introduction

Mairs Turnstile has a wide range of turnstiles to suit any pedestrian requirement including wheelchair accessibility. security waist height turnstile is a smart access control security system. It offers a reliable and efficient method to ensure only authorized users are allowed access to each area of a building.

The slim turnstile gate is sleek and elegant design gate. It controls the people enter or exit the restricted area. The casing is made of high quality brushed 304 stainless steel which is robust, rigid and anti-rust and durable.

The mechanism uses cutting edge technology to min the size but ensure the high performance. They are also equipped with famous brand DC brushless motor and sophisticated sensor. Any attempt to bypass the turnstile will be detected and an alarm will sound to alert nearby guard staff.

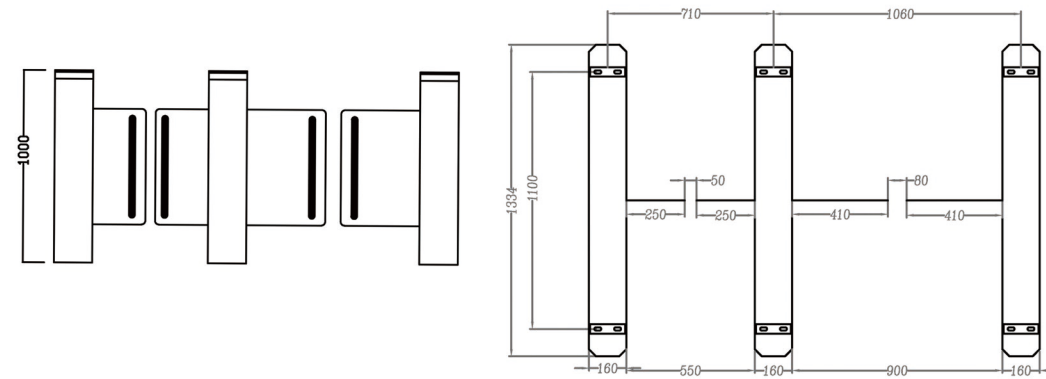
It has a standard relay output, which can be easily integrated with all kinds of third part access control system. The high speed fingerprint reader swing barrier gate can be integrated with various credential, such as facial recognition device, fingerprints, QR reader & RFID systems, IR thermometer. There are many benefits of having access automatic barrier gate. These are extra layers of security to help with crowd control or prevent the opportunist thief from entering your business or residential premises.

It comes with 5 pairs infrared sensors to ensure the security of passage at high throughput. The reasonable design and high configuration is to ensure the gates can move quickly and accurately, stably and quietly; with low-power consumption, energy conservation and environment protection.

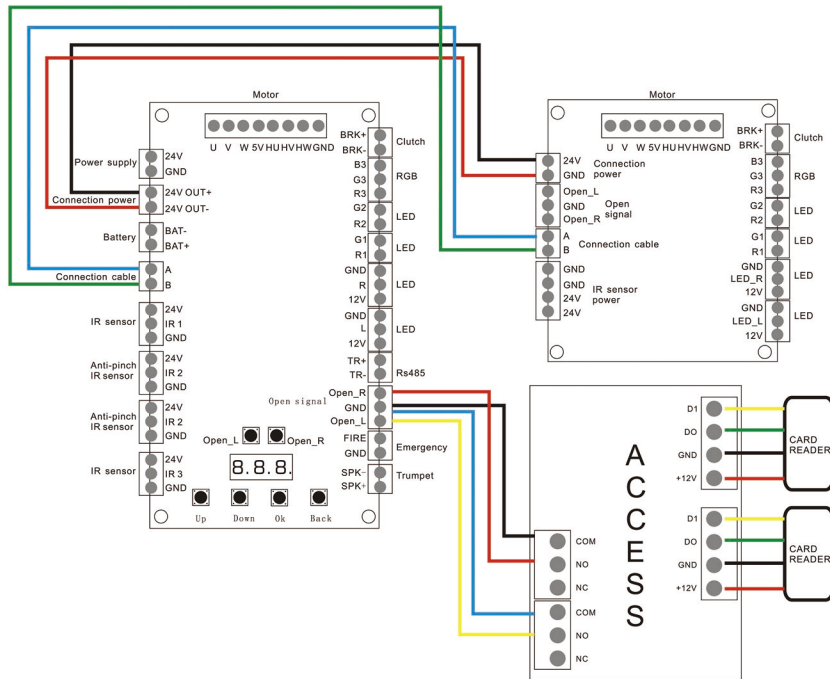
Technical Parameter

• Size	1310*200*1000mm (can be customized)
• Material	SUS 304 stainless steel +Black Acrylic
• Arm material	10mm Acrylic
• Pass Width	standard 550mm max 900mm
• Passage direction	Single directional/Bi-directional
• Pass rate	30-35 persons/minute
• Operating time	0.2 seconds
• Power input	AC100-240V,50/60HZ
• Working voltage	24V
• Working humidity	30%~95%
• Working temperature	-40°C~+70°C
• Working environment	indoor
• Input interface	RS485, Dry Contact Relay
• Mechanism	DC Brushless motor
• Infrared sensor	5 pairs
• MCBF	3,000,000 Cycles
• Feature	LED can be added on arms
• Application	Office Building, Hotels, Government Halls, etc

Dimension of Turnstile



Wiring diagram



Access Control System



Feature

LED ALERTS

Indicate traffic direction with highly-visible green arrows and red X icons. It achieves real-time displaying which improves the passing rate and convenient maintenance.

EMERGENCY EXIT

Functionality allows free passage in the event of an emergency or power outage, automatic reset when power is restored.

WORKING DIRECTION

Single directional or Bi-directional is optional.

AUTOMATIC RESET

Arms will lock automatically within 5s (adjustable) if a person delays access.

ANTI-COLLISION

When the gates instantaneously encounter an impulse force that is beyond the safety range, the arm will automatically reset in place. The mechanism will not be damaged at all.

ANTI-PASS BACK

The turnstile will alarm and red light will flash if someone wants to enter in the reverse direction.

ANTI-TRAILING

The gate will alarm if more than one person passes by without permission.

ANTI-INTRUSION

The gate will auto alarm and red light will flash when an unauthorized person gets in.

FAST UNLOCK

When there is a valid signal, the gate will unlock within 0.2s.

ANTI-HIT MECHANISM

If someone hits the arm, it will open to release the force and reset automatically.

ARM LED LIGHT

LED on arms is an optional function.

HIGH PERFORMANCE

Long service life with low operational cost.

Packaging



01

Packed in protective film and pearl cotton



02

Packed in carton



03

Packed in standard export wooden cases